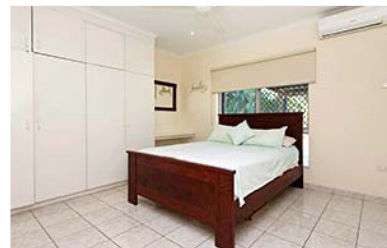
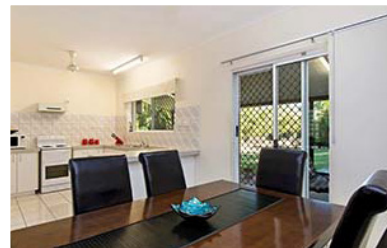


julio@rvpnt.com  
www.rvpnt.com

Office: 08 8983 1888  
Fax: 08 8983 1886

# FAMILY HOME 4X2 LOW \$500K



## 10 Sibbald Cres Woodroffe \$529,950

SPACIOUS FAMILY HOME, BIG YARD, BACKING TRANQUIL PARK  
GROUND LEVEL, BRICK RENDERED  
IMMACULATE 4 BEDROOM, 2 BATHROOM HOME  
COVERED PATIO FOR ENTERTAINING  
DOUBLE CARPORT  
GARDEN SHED  
ROOM FOR A BIG POOL  
ABSOLUTE PRIVACY & TRANQUILITY  
FULLY CODED

### THE HOUSE

This home is approximately 200m2 under roof, well presented and all certified. Offering 4 double bedrooms, all with split air-conditioning and built in robes, the main with en-suite, open plan living, large kitchen with loads of storage, pantry and breakfast bar.

### THE SHED

For the toys and tools.

### THE BLOCK

This fully fenced 800m2 block backs on to a tranquil park, is landscaped with auto reticulation, large covered entertaining with room for a big pool. Also on offer is a double carport plus more secure parking behind the security gate.

**INCREDIBLE VALUE IN THE MID \$500,000s**



realvaluepropertiesnt



# FOR SALE

**Julio Leschi**  
realvaluepropertiesnt  
Principal

**Mobile: 0404 074 311**