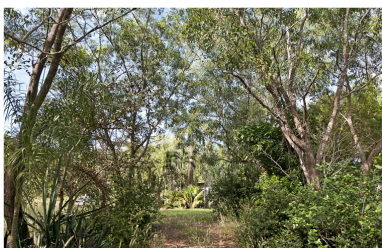


julio@rvpnt.com
www.rvpnt.com

Office: 08 8983 1888
Fax: 08 8983 1886



GREAT RURAL STARTER HOME

2 1.5 2
SHED

15 Belgrave Road, Bees Creek

\$550,000

A GREAT START IN THE RURAL AREA!
CERTIFIED GROUND LEVEL EASY LIVING 2 BEDROOM, 1½ BATHROOM HOMESTEAD
3M WIDE VERANDAHS FRONT & BACK
CERTIFIED 9M X 6M CARPORT WITH 6M X 4M WORK SHED ATTACHED
ABSOLUTE PRIVACY & TRANQUILITY
80% DRY CORNER BLOCK WITH WET SEASON CREEK ON BACK FENCE LINE
EASY CARE BUSH BLOCK WITH LAWN AROUND THE HOME ON 5 ACRES
NO FUSS TOWN WATER

THE HOUSE

This 1993 built metal clad home is approximately 170m² under roof, reasonably tidy presented, offering 3m wide wrap around front and rear verandahs, creating lots of separate spaces for entertaining or a moment's peace in all seasons with bush outlooks on both sides.

Open plan living, 2 bedrooms with built in robes and split air-conditioners, second toilet outside under the rear verandah next to the laundry.

The kitchen is original, spacious, and functional.

THE SHED & PARKING

For the toys & hobbies you get a coded 9m x 6m powered open shed with attached closed 6m x 4m work shop.

THE BLOCK

The block is fully fenced, 80% dry, with 5 acres of bush, gardens and lawn. The property also offers reliable town water.

This is great rural value with a lot of room to make your dreams a reality, just around 5 minutes from Coolalinga shopping centres.

Pricing was set with consultation by an independent valuation company for accuracy and confidence for bank approval.

Don't miss this opportunity as rural properties are still selling fast; book your personal inspection with Julio today.



Julio Leschi
realvaluepropertiesnt
Principal

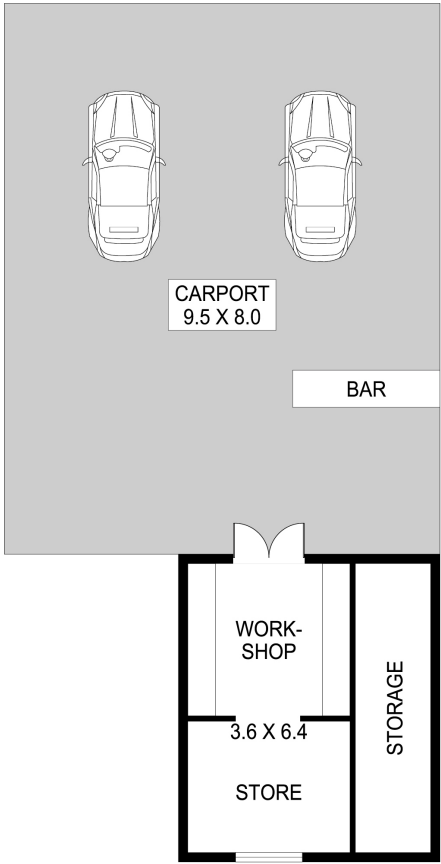
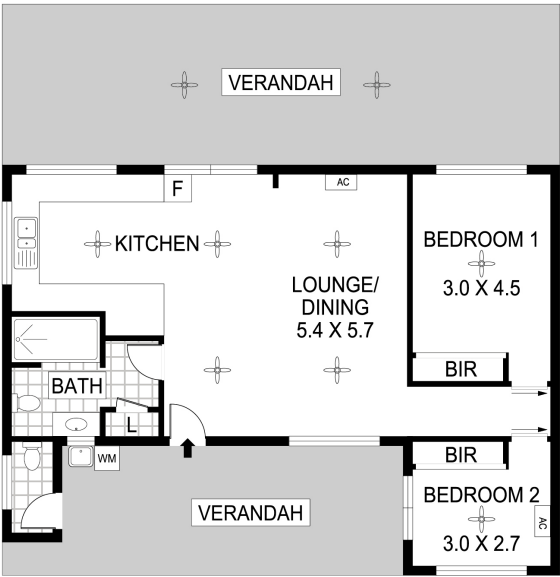
Mobile: 0404 074 311



realvaluepropertiesnt



15 Belgrave Road, Bees Creek



Scale in metres. Indicative only. Dimensions are approximate. All information contained herein is gathered from sources we believe to be reliable. However we cannot guarantee its accuracy and interested persons should rely on their own enquiries