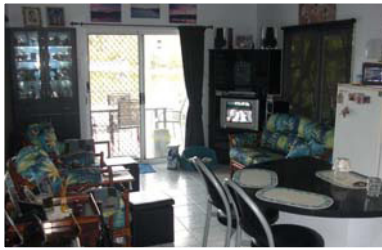


julio@rvpnt.com
www.rvpnt.com
Phone: 0404 074 311



LAKE

23 Chinner Rd, Lake Bennett **\$310,000**

WHO WOULD HAVE THOUGHT. A QUALITY WATERFRONT PROPERTY IN THE LOW \$300,000s.

Just add people to enjoy the tropics all year round on the cooling waters of Lake Bennett, free from noisy neighbours, and the cares of life.

Once you set foot in this waterfront home you will immediately feel the RELAXATION, REFRESHMENT and PURE FUN take hold of you. NO NEED TO GO ANYWHERE but if you feel lazy, dinner is served at the resort restaurant.

Spend a life time, a retirement, a week or a weekend or even collect an income that pays the mortgage while you're at work which still allows you to stay on your selected weekends and enjoy this tropical bliss with your family and friends.

Situated on Lake Bennett which is one of the rare safe to swim and fish areas in the Top End, approximately 30 minutes to Coolalinga, 40 minutes to Palmerston and under 60 minutes to Darwin's CBD, or 30 minutes to Litchfield's playground with all the waterfalls and water holes to explore and swim in, and numerous rivers to catch loads of Barra.

SO WHAT WILL YOU BE DOING???

FISHING, SWIMMING, KAYAKING, STAND UP PADDLE BOARDING, SAILING OR ENJOYING A NICE COLD BEER ON THE DECK WHILE COOKING ON THE BBQ WITH SOME FREINDS AND ENJOYING THE UNSPOILED VIEW?

Homely presentation and dry as a bone year round.

This IMMACULATE home with stunning yet low care gardens comes as a complete package with furniture, crockery and linen.

The block is a tidy 198m². The house being absolute water front also offers a large covered pontoon to swim, fish or entertain from.

INSIDE has an open plan lounge dining & kitchen, 2 bedrooms with built-ins and air conditioners, a full bathroom, external laundry, double covered parking. The property can comfortably sleep up to 5 adults.

realvaluepropertiesnt



Julio Leschi
realvaluepropertiesnt
Principal

Mobile: 0404 074 311

