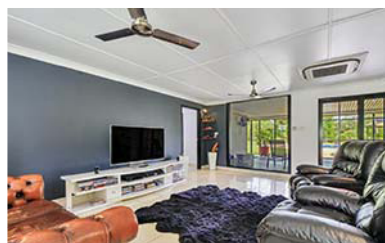
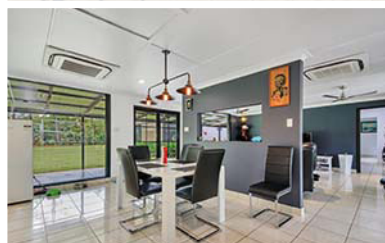


julio@rvpnt.com  
www.rvpnt.com

Phone: 0404 074 311



## THE BEEZ KNEEZ

### 330 Bees Creek Rd, Bees Creek

\$850,000



POOL

#### ALL THE BELLS & WHISTLES

#### THE HOME

Ground level near new cool insulated Colorbond house  
4 double bedrooms, main with en-suite, separate toilet, & WIR  
2nd main bedroom with separate lounge / TV area  
All bedrooms have built in robes and split air-conditioners  
Open plan & roomy. Cool light coloured tiles and stylish finishes  
Amazing bathrooms with double basins & floor to ceiling tiles  
Gas cooking & infinity hot water, won't blow away in a cyclone

#### TECHNOLOGY

App controlled pool, irrigation & lighting  
All the latest technology  
LED multicoloured mood lighting outside  
Generator back-up power.

#### FAMILY FUN

Amazing kids play area  
Paved pool area with in ground auto self-levelling pool and separate spa + large awning  
Separate outside enclosed laundry with 3rd bathroom  
Wrap-around dry covered outside areas

#### BOYZ ZONE

Covered parking for up to 8-10 vehicles  
Triple garage & large workshop area  
Triple carport and large store room  
New solar powered American barn with another carport  
Set up for horses with new stable  
Stone 2-way driveway

#### THE BLOCK

Paved walkways throughout the block  
Landscaped dry 5 acres with selected small pockets of native bush. Feature banyan tree  
Reliable town water with taps in multiple locations on the block  
Fully fenced including painted and welded steel rail and post  
Full 5 acres auto reticulated with blue line piping.

Nothing has been spared, with over \$1,500,000 recently spent on this incredible property and is a must see to believe estate with more features than space to write them.

Book your private viewing today. Please note the property is situated just on the boundary of Bees Creek & Virginia, past Lowther Rd.

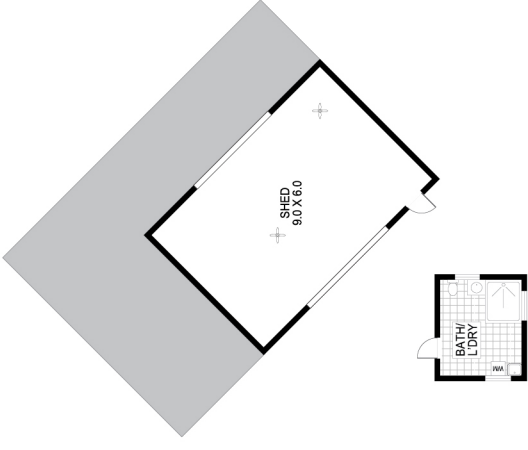
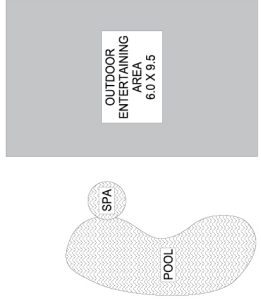
realvaluepropertiesnt



**Julio Leschi**  
realvaluepropertiesnt  
Principal

**Mobile: 0404 074 311**





Scale in metres. Indicative only. Dimensions are approximate. All information contained herein is gathered from sources we believe to be reliable. However we cannot guarantee its accuracy and interested persons should rely on their own enquiries

# 330 Bees Creek Road, Bees Creek