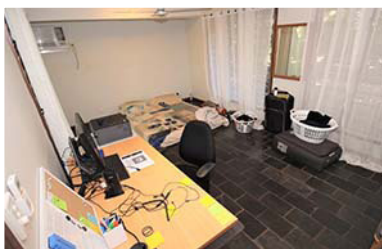
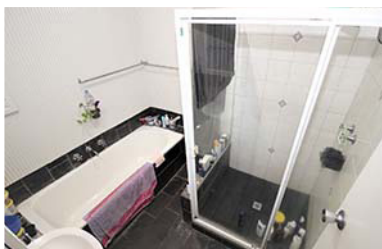


julio@rvpnt.com
www.rvpnt.com
Phone: 0404 074 311



PRIME LOCATION, ELEVATED, RAIN FOREST RETREAT!

49 Gregory Street, Parap

\$650,000

4 1 2
SHED | POOL

SWEET LOCATION!

FEATURING

ELEVATED, LIGHT AND BREEZY
ROOM TO GROW FOR A FAMILY
680M2 OF COOL, PRIVATE RAIN FOREST LIVING IN TOWN
4 BEDROOMS & 1 BATHROOM WITH SEPARATE TOILET
4TH BEDROOM IS A TEEN OR PARENTS' RETREAT WITH WALK-IN ROBE
SECURE COVERED PARKING
2 BIG COVERED ENTERTAINING AREAS
ROOM TO ENCLOSE A 2x1 GRANNY FLAT
STOREROOM
READY TO FINISH IT THE WAY YOU WANT
POSITIONED AMONG MILLION DOLLAR HOMES

THE HOME

Easy care living elevated home, offering 4 generous bedrooms, 1 bathroom, also offering free-flowing open plan lounge / dining to the kitchen and huge deck looking through the rain forest canopy.

Split air conditioners in all rooms and living area.

THE BUILDING

Elevated, home, pre Cyclone Tracy with lawful existence certificate.
Metal roof
Huge rear veranda
Covered under building for entertaining
Secure covered parking for 2 cars or boat

THE BLOCK

Level, sizeable block 680m2
Fully fenced, secure and dry

THE LOCATION

Just a close walk to school, shops, markets, pool & bus.

THE PRICE

Real value in the upper \$600,000s.
Get in while prices are still affordable to buy into Parap's golden triangle.

Book your private viewing to today.

realvaluepropertiesnt



Julio Leschi
realvaluepropertiesnt
Principal

Mobile: 0404 074 311

